

DataStore User Guide



Submitted To: Program Manager
GeoConnections
Victoria, BC, Canada

Submitted By: Jody Garnett
Refractions Research Inc.
Suite 400 - 1207 Douglas Street
Victoria, BC, V8W-2E7
jgarnett@refractions.net
Phone: (250) 383-3022
Fax: (250) 383-2140

TABLE OF CONTENTS

TABLE OF FIGURES.....	2
INTRODUCTION	3
1 CREATE DATASTORES	4
1.1 STEP 1: GET TO THE DATASTORE PAGE.....	4
1.2 STEP 2: CREATE A NEW DATASTORE.....	5
1.3 STEP 3: DEFINING A DATASTORE.....	5
1.4 STEP 4: APPLY SETTINGS.....	7
1.5 STEP 5: SAVE SETTINGS.....	7

TABLE OF FIGURES

Figure 1: Welcome page	4
Figure 2: Configuration page	4
Figure 3: Data configuration page	4
Figure 4: DataStore configuration page	5
Figure 5: Create new DataStore page	5
Figure 6: DataStore configuration	6
Figure 7: Setup error	6
Figure 8: Apply button	7
Figure 9: Save button	7

INTRODUCTION

The Validating Web Feature Server (VWFS) project (<http://vwfs.refractions.net>) for OpenGIS architectures enhances the GeoServer open-source Web Feature Server, allowing it to access data in standard commercial spatial databases (OracleSpatial, ArcSDE, PostGIS).

The VWFS project also provides a mechanism for ensuring that features edited via GeoServer are spatially clean before allowing them to be inserted into the spatial backend databases.

The VWFS project was completed by Refrations Research, which gratefully acknowledges the GeoConnections Secretariat for providing matching funds for the development via the GeoInnovations program.

This document describes how to create a DataStore in GeoServer.

1 CREATE DATASTORES

The first step is to connect to GeoServer and log into your account. This tutorial assumes you have done that.

1.1 Step 1: Get to the DataStore page

When you have logged in, you will appear at the 'Welcome' page. To get to the DataStore page, click on the 'Config' button in the navigation area.



Figure 1: Welcome page

Next, click on the 'Data' button in the navigation area.



Figure 2: Configuration page

And last, click on the 'Stores' button in the navigation area.



Figure 3: Data configuration page

1.2 Step 2: Create a new DataStore

To create a new DataStore, click on the 'New' button in the navigation area.

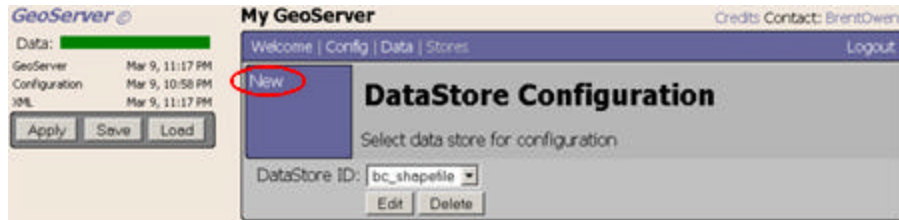


Figure 4: DataStore configuration page

This will take you to the DataStore creation page. Here you can select which type of DataStore you want to use, from the drop-down menu, and you must provide a name for the DataStore, in the 'DataStore ID' text field.

In this example, we will select PostGIS as our DataStore.



Figure 5: Create new DataStore page

Next we click on the 'New' button to save the DataStore.

1.3 Step 3: Defining a DataStore

Within the "DataStore Editor" page, you must define all the information needed to read from your chosen DataStore. In our example, we set up the connection information for a PostGIS database.

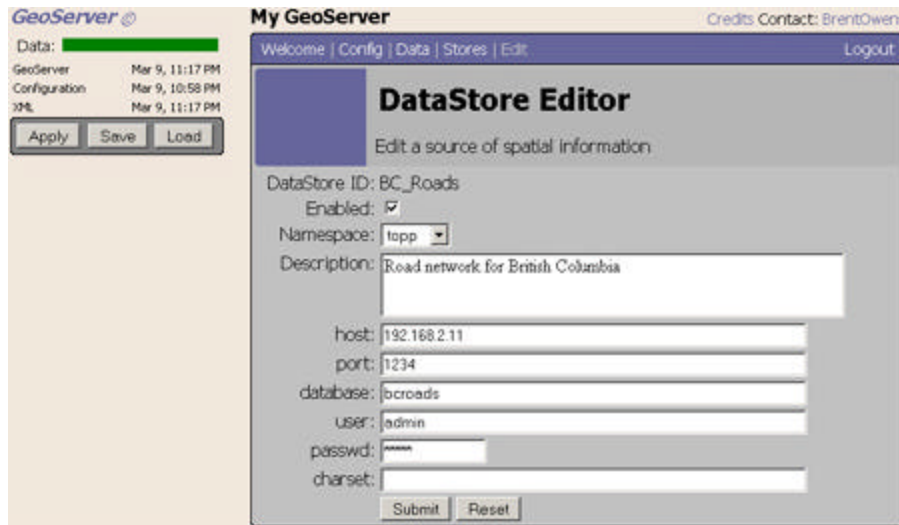


Figure 6: DataStore configuration

When you are finished with your DataStore configuration, click on the 'Submit' button.

GeoServer will now attempt to read from the DataStore you specified. If it fails to read from it, you will get an error message similar to this one:

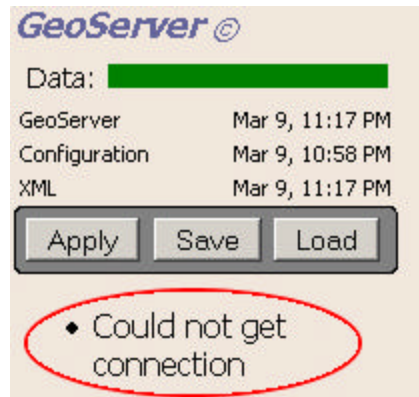


Figure 7: Setup error

Each error message will be specific to the type of error and the type of DataStore you are using.

If the DataStore succeeds, you will be taken back to the 'DataStore Configuration' page.

Then you can edit or delete the DataStores you have added.

1.4 Step 4: Apply settings

When you have set up your DataStores, you can apply the changes by hitting the 'Apply' button.

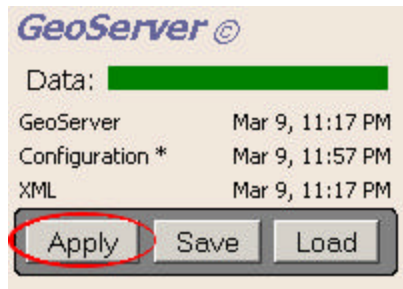


Figure 8: Apply button

1.5 Step 5: Save settings

When you are satisfied with your settings, you can hit the 'Save' button to save your settings.

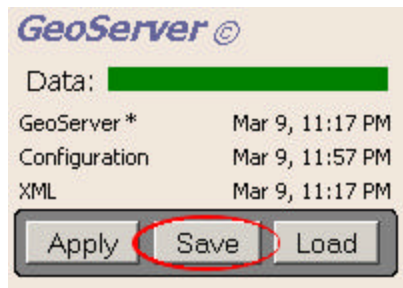


Figure 9: Save button