

FeatureType User Guide



Submitted To: Program Manager
GeoConnections
Victoria, BC, Canada

Submitted By: Jody Garnett
Refractions Research Inc.
Suite 400 - 1207 Douglas Street
Victoria, BC, V8W-2E7
jgarnett@refractions.net
Phone: (250) 383-3022
Fax: (250) 383-2140

TABLE OF CONTENTS

TABLE OF FIGURES.....	2
INTRODUCTION	3
1 TOPIC ONE.....	4
1.1 STEP 1: GET TO THE FEATURETYPE PAGE.....	4
1.2 STEP 2: CREATE A NEW FEATURETYPE.....	5
1.3 STEP 3: DEFINE THE FEATURETYPE.....	5
1.4 STEP 4: APPLY SETTINGS.....	6
1.5 STEP 5: SAVE SETTINGS.....	6

TABLE OF FIGURES

Figure 1: Welcome page	4
Figure 2: GeoServer Configuration page	4
Figure 3: Data Configuration page	4
Figure 4: FeatureType Configuration page	5
Figure 5: FeatureType Editor page	5
Figure 6: Apply button.....	6
Figure 7: Save button	6

INTRODUCTION

The Validating Web Feature Server (VWFS) project (<http://vwfs.refractions.net>) for OpenGIS architectures enhances the GeoServer open-source Web Feature Server, allowing it to access data in standard commercial spatial databases (OracleSpatial, ArcSDE, PostGIS).

The VWFS project also provides a mechanism for ensuring that features edited via GeoServer are spatially clean before allowing them to be inserted into the spatial backend databases.

The VWFS project was completed by Refrations Research, which gratefully acknowledges the GeoConnections Secretariat for providing matching funds for the development via the GeoInnovations program.

This document describes how to create a FeatureType in GeoServer.

1 TOPIC ONE

The first step is to connect to GeoServer and log into your account. This tutorial assumes you have done that.

1.1 Step 1: Get to the FeatureType page

When you have logged in, you will appear at the 'Welcome' page. To get to the Featuretype page, click on the 'Config' button in the navigation area.



Figure 1: Welcome page

Next, click on the 'Data' button in the navigation area.



Figure 2: GeoServer Configuration page

And last, click on the 'FeatureType' button in the navigation area.

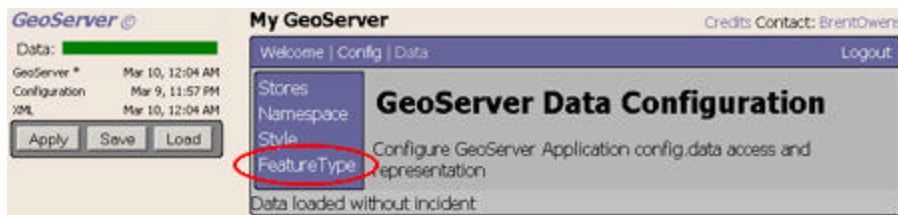


Figure 3: Data Configuration page

1.2 Step 2: Create a new FeatureType

In the 'FeatureType Configuration' page, click on the 'New' button in the navigation area.

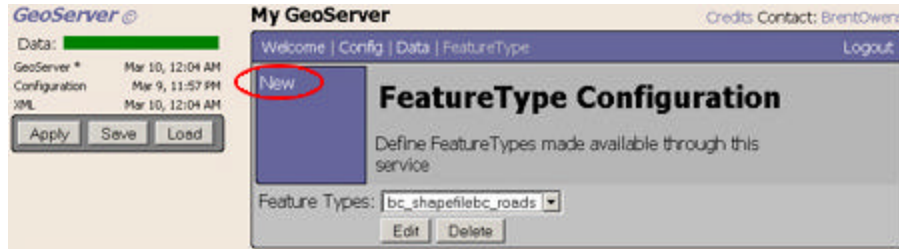


Figure 4: FeatureType Configuration page

1.3 Step 3: Define the FeatureType

This is the page that defines the new FeatureType. Important areas to note are the SRS, Bounding Box, and Schema Base.

The SRS (Spatial Reference System) value is a numerical ID that specifies a geometric projection. Once you select an SRS, you can click on the yellow 'Bounding Box' button to populate the four fields: min lat, min long, max lat, max long. These values will be different depending on the SRS value.

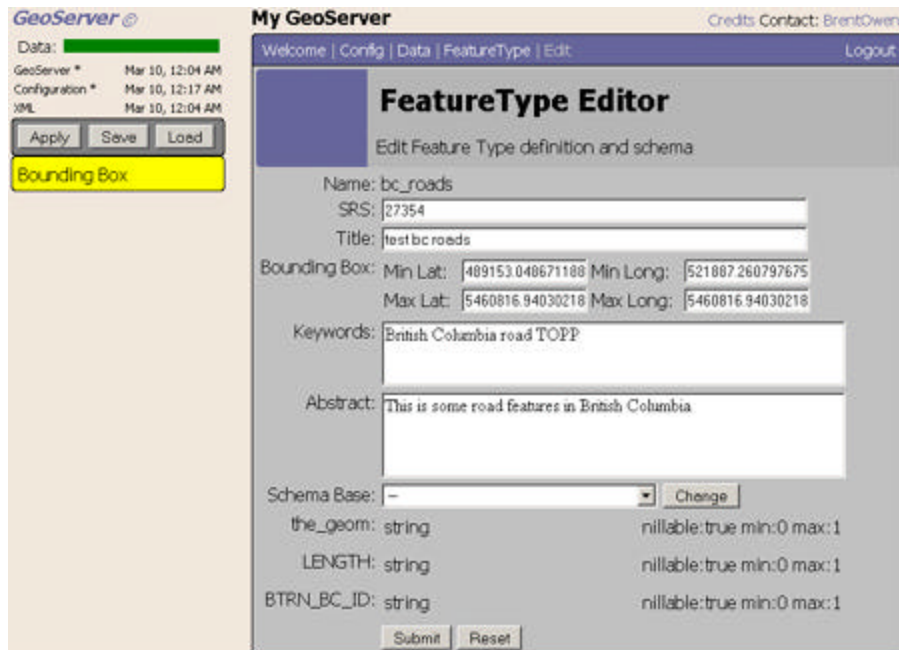


Figure 5: FeatureType Editor page

Once you have defined your FeatureType, click on the 'Submit' button.

1.4 Step 4: Apply settings

When you have defined all of your FeatureTypes, you can apply the changes by clicking on the 'Apply' button.

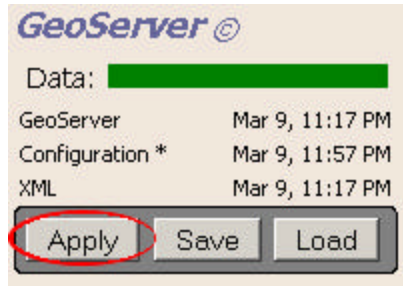


Figure 6: Apply button

1.5 Step 5: Save settings

When you are satisfied with your settings, you can click on the 'Save' button to save your settings.

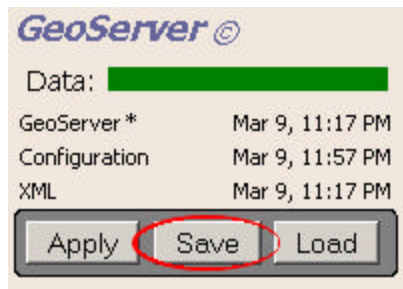


Figure 7: Save button